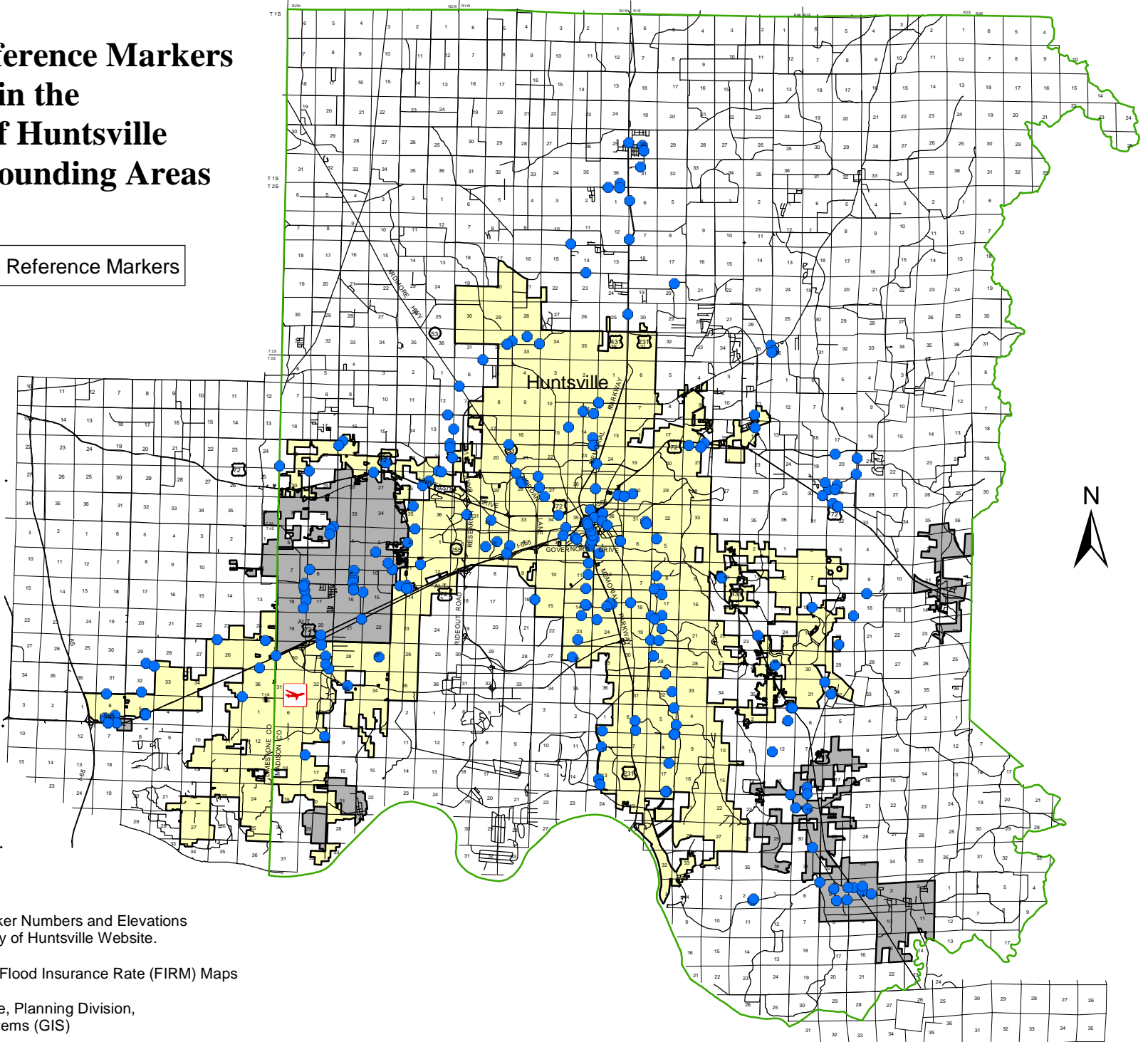


FEMA Reference Markers in the City of Huntsville and Surrounding Areas

● FEMA Reference Markers



Note: FEMA Reference Marker Numbers and Elevations can be obtained from the City of Huntsville Website.

Source: GIS Database from Flood Insurance Rate (FIRM) Maps
Date Created: March 2003
Created By: City of Huntsville, Planning Division,
Geographic Information Systems (GIS)