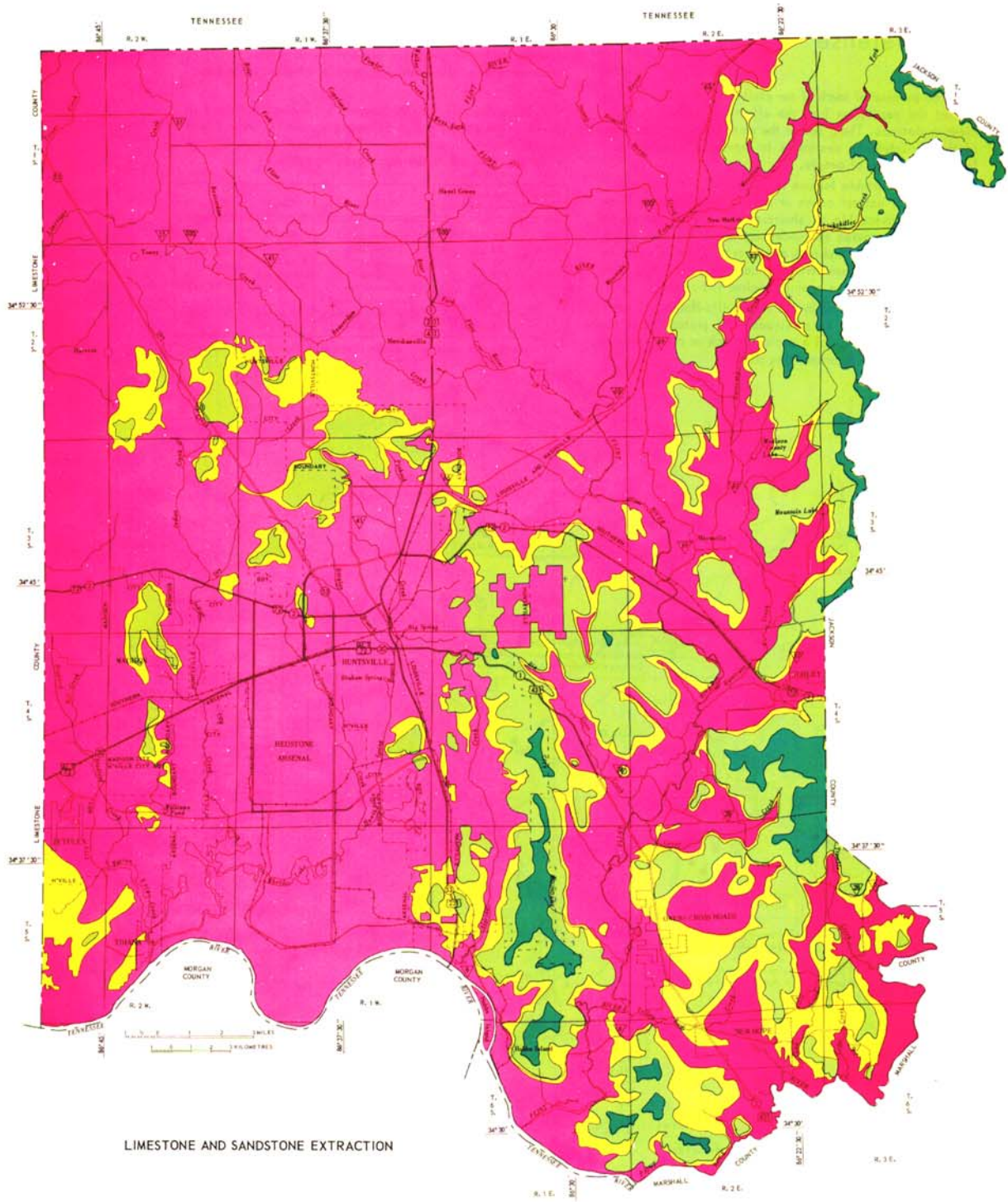


Limestone and Sandstone Extraction of Madison County



LIMESTONE AND SANDSTONE EXTRACTION

EXPLANATION

Classification	Rock type	Rock suitable for extraction	Depth to bedrock	Flood Prone area	Populated area
Most suitable	Sandstone	Yes	Less than 10 feet	No	No
	Limestone	Yes	Less than 10 feet	No	No
Moderately suitable	Limestone	Yes	10-30 feet	No	No
Least suitable	Limestone (some shale)	No	More than 30 feet	Yes	Yes

Note: When sandstone is present, it is covered by 10 feet or less of overburden, and is designated as MOST SUITABLE.

Source: Geological Survey of Alabama, Atlas Series 8, 1975