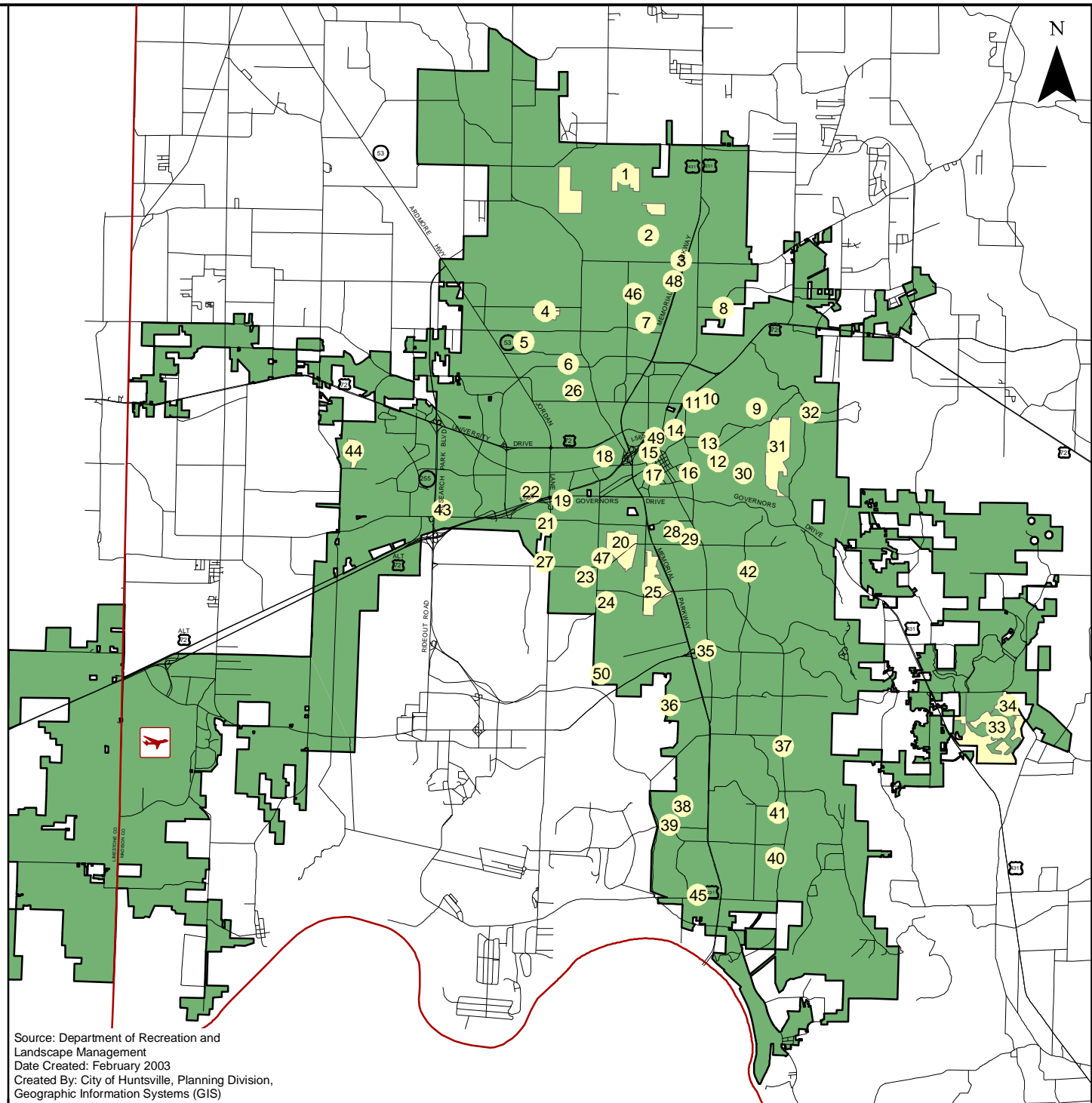


City of Huntsville Parks

Legend

- Huntsville City Limits
- City Parks

ID	Name	Acreage
1.	Wade Mtn. Preserve	559.00
2.	Windsor Manor Park	5.04
3.	Maplewood Park	10.00
4.	Stoner Park	69.10
5.	Mastin Lake Park	31.60
6.	Scenic View Park	5.10
7.	Lakewood Park	13.80
8.	Edmonton Heights Park	8.77
9.	Oak Park	10.00
10.	Philpot Park	3.99
11.	Optimist Park	8.55
12.	Maple Hill Park	8.64
13.	Wellman Park	0.70
14.	Beirne Avenue Park	1.56
15.	Gateway Park	5.50
16.	California Street Park	2.99
17.	Big Spring Park	15.25
18.	Hillendale Park	0.81
19.	Pine Park	2.79
20.	Brahan Spring Park	174.88
21.	Kiwanis Soccer Park	3.00
22.	University Park	10.54
23.	Archer Park	3.12
24.	Chelsea Park	3.40
25.	John Hunt Park	432.00
26.	Oakmont Park	3.72
27.	Metro Softball Complex	88.45
28.	Mayfair Park	9.20
29.	Hastings Park	0.37
30.	Hermitage Park	14.37
31.	Monte Sano Preserve	760.00
32.	Cold Springs Park	30.00
33.	Annie Hays Nature Preserve	538.00
34.	Cove Park	100.00
35.	Fern Bell Recreation Center	20.81
36.	Kent Robertson Park	4.98
37.	Willow Park	7.74
38.	Buchanan Park	4.00
39.	Bell Mtn. Park	29.78
40.	McGucken Park	39.78
41.	Ken Johnston Park	11.60
42.	GreenWyche Village Park	0.81
43.	Sherwood Park	5.14
44.	Creekwood Park	68.43
45.	Sandhurst Park	15.66
46.	Dr. Richards Showers, Sr. Park	16.95
47.	Merrimack Soccer Complex	33.00
48.	Meadow Hill Park	1.50
49.	Skate Park	0.66
50.	Ogden Martin	2.50



Source: Department of Recreation and Landscape Management
 Date Created: February 2003
 Created By: City of Huntsville, Planning Division, Geographic Information Systems (GIS)